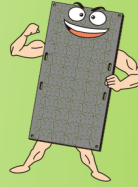
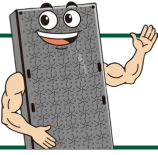


# JULIGHT SERIES



(\*) Certified by reputable standards: NETIS and Eco Mark

## A sustainable alternative to steel plates, plywood, and rubber mats



Protect the subgrade and pavement from damage, create stable access for vehicles and pedestrians, and help machinery operate more safely and efficiently!

Julight Series are manufactured from recycled Polyethylene (PE)

### Recycled polyethylene (PE)

is sourced from rice bags, food containers, and other common plastic products. Only carefully selected materials are used, ensuring no harmful impact on the soil or the environment.

### Produced with our patented molding and pressing technology:

The raw materials are uniformly mixed, then melted with heat and continuously extruded and pressed.

This process results in a final product that is smooth, durable, strong, thin, and evenly formed.

## PRODUCT HIGHLIGHTS

12 times more load efficiency than steel plates

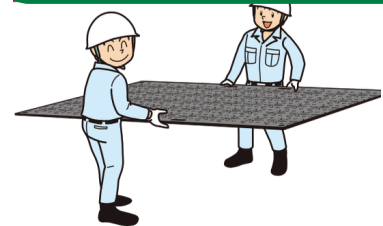
Significant reduction in transport costs



Steel plate installation is time-consuming and labor-intensive



Whereas JULIGHT Easily carried by 2 people



Excellent ground adherence



Unlike materials like steel, which struggle to grip uneven surfaces

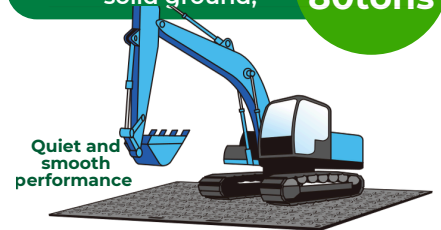


Highly elastic, flexible, and resistant to cracking



When laid on solid ground,

Supports a total vehicle weight of up to 80tons



Quiet and smooth performance



Durable and impact-resistant; able to withstand high pressure



Completely waterproof and long-lasting in use



Flexible and adaptable to various terrains



Excellent insulation and resistant to physical property degradation



Usable in temperature conditions from -15°C to 50°C



Rust-resistant and chemical-resistant (acid and alkali)



Easy to cut, drill, and nail – quick handling with power tools

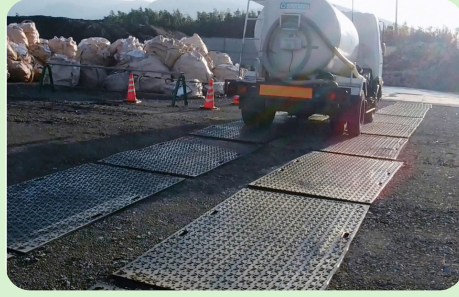


Easy to clean and resistant to dirt accumulation



Lighter than steel, easier to handle, and more cost-effective

### CONSTRUCTION & CIVIL ENGINEERING (TEMPORARY USE)



### AGRICULTURE (GREENHOUSES, FARMS, LIVESTOCK)



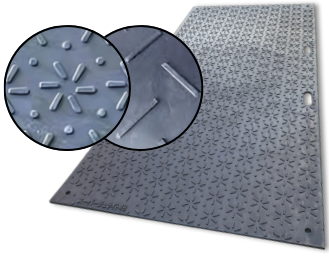
### FACTORIES, EVENTS, SUBSTATIONS & TRUCK FLOORING



- The Imperial Household Agency, the Ministry of Land, Infrastructure, Transport and Tourism, JR West, the National Sports Festival, and support activities during the Kumamoto Earthquake, etc.
- Applicable for various civil engineering and construction projects, factories, warehouses, and other industrial and agricultural sites.

## SUPERJULIGHT 48/48W

Designed for construction sites with heavy-duty requirements



| Product name | Dimension (mm) | Weight (kg) |
|--------------|----------------|-------------|
| SJ 48        | 1220 x 2440    | 40          |
| SJ 48W       | 1220 x 2440    | 40          |



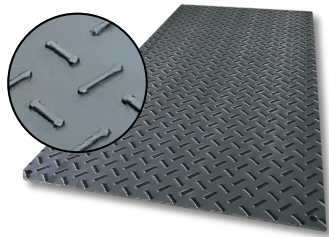
Roadways for heavy trucks



Construction and civil engineering sites

## SUPERJULIGHT 36/M2

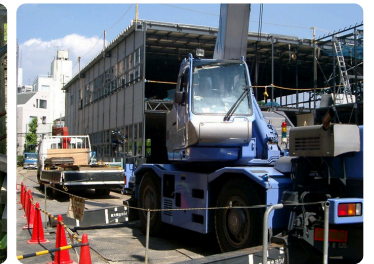
Standard sizes for easy application in a wide range of scenarios



| Product name | Dimension (mm) | Weight (kg) |
|--------------|----------------|-------------|
| SJ 36        | 910 x 1820     | 19          |
| SJ M2        | 1000 x 2000    | 23          |



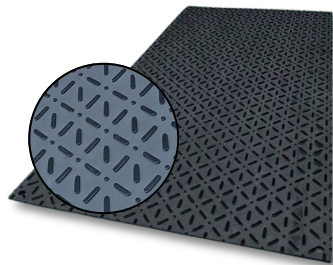
Flooring for farms



Station construction projects

## RAKURAKUBAN

Ultra-lightweight design specialized for agriculture, making it easy to carry and install



| Product name | Dimension (mm) | Weight (kg) |
|--------------|----------------|-------------|
| Rakuraku Ban | 910 x 1820     | 10          |



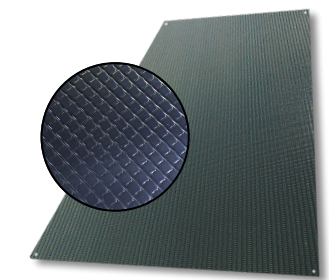
Walkways in vineyards



Temporary parking areas

## JULIGHT 6/10

Thin, lightweight, and flexible mats with a smoother surface that resists dirt buildup



| Product name | Dimension (mm) | Weight (kg) |
|--------------|----------------|-------------|
| Julight 6    | 910 x 1820     | 9           |
| Julight 10   | 910 x 1820     | 15          |



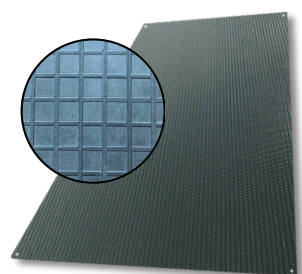
Temporary flooring in warehouse



Factory flooring

## ARUKUBAN 6/10

Flat, anti-slip surfaces that are safe even for children



| Product name | Dimension (mm) | Weight (kg) |
|--------------|----------------|-------------|
| Arukuban 6   | 910 x 1820     | 9           |
| Arukuban 10  | 910 x 1820     | 15          |



Garden pathways



# INSTALLATION GUIDE

## 1

### Level the ground

Remove sharp stones and smooth out the surface to avoid deformation during use

## 2

### Manual installation

The product is lightweight and can be installed manually without machinery. Even the heaviest model weighs only about 40 kg.


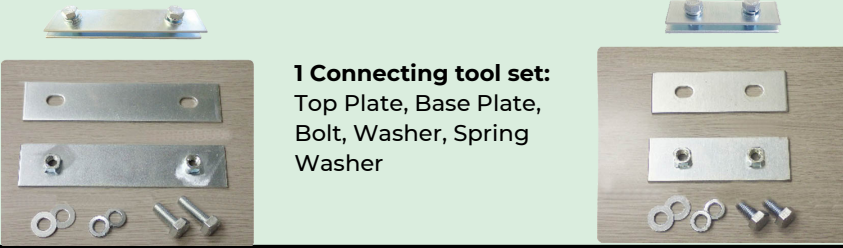
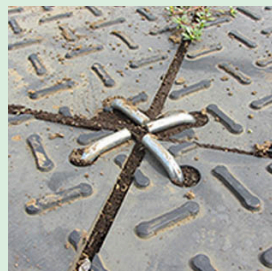


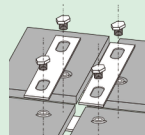
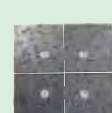


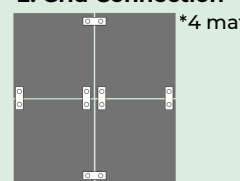
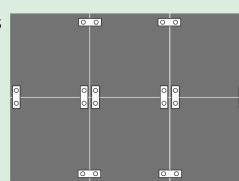
## 3

### Secure with accessories

For long-term use, it is recommended to use fixing accessories to minimize displacement and ensure safety when moving on the surface.

**(\*) Note:**  
**Leave a 10-20mm gap between mats**  
 Since the polyethylene material may expand with temperature changes, leaving gaps helps prevent warping or lifting

## FIXING & CONNECTING TOOL SET

| FIX TOOL   | CONNECTING TOOL SET  |                |           |      |   |   |   |   |   |   |     |  |           |      |   |   |   |   |   |    |   |    |     |  |
|--|--|----------------|-----------|------|---|---|---|---|---|---|-----|--|-----------|------|---|---|---|---|---|----|---|----|-----|--|
| L-TYPE ANCHOR  | JOINT PLATE-48   | JOINT PLATE-36 |           |      |   |   |   |   |   |   |     |  |           |      |   |   |   |   |   |    |   |    |     |  |
| <p>For use on soil and similar surfaces.</p>  |  <p><b>1 Connecting tool set:</b><br/>Top Plate, Base Plate, Bolt, Washer, Spring Washer</p>   |                |           |      |   |   |   |   |   |   |     |  |           |      |   |   |   |   |   |    |   |    |     |  |
| <p>Use 4 anchoring pins per mat.</p>         | <p>Can be fixed at 2-point or 4-point</p> <div style="display: flex; justify-content: space-around;"> <div style="text-align: center;"> <br/>             2-point Fixing ①         </div> <div style="text-align: center;"> <br/>             2-point Fixing ②         </div> <div style="text-align: center;"> <br/>             4-point Fixing ①         </div> <div style="text-align: center;"> <br/>             4-point Fixing ②         </div> <div style="text-align: center;"> <br/>             4-point Fixing ③         </div> </div> <p>(*) The required number of connecting sets will vary depending on the mat arrangement. Below are examples of common layout patterns and the corresponding quantity of sets.</p> <div style="display: flex; justify-content: space-around;"> <div style="text-align: center;"> <p><b>1. Linear (End-to-End) Connection</b></p>  <p>*4 mats</p> <table border="1" style="margin: 0 auto;"> <thead> <tr><th>Mats(pcs)</th><th>Sets</th></tr> </thead> <tbody> <tr><td>2</td><td>2</td></tr> <tr><td>3</td><td>4</td></tr> <tr><td>4</td><td>6</td></tr> <tr><td>...</td><td></td></tr> </tbody> </table> </div> <div style="text-align: center;"> <p><b>2. Grid Connection</b></p> <div style="display: flex; justify-content: space-around;"> <div style="text-align: center;">  <p>*4 mats</p> <table border="1" style="margin: 0 auto;"> <thead> <tr><th>Mats(pcs)</th><th>Sets</th></tr> </thead> <tbody> <tr><td>2</td><td>2</td></tr> <tr><td>4</td><td>6</td></tr> <tr><td>6</td><td>10</td></tr> <tr><td>8</td><td>14</td></tr> <tr><td>...</td><td></td></tr> </tbody> </table> </div> <div style="text-align: center;">  <p>*6 mats</p> </div> </div> </div> </div> |                | Mats(pcs) | Sets | 2 | 2 | 3 | 4 | 4 | 6 | ... |  | Mats(pcs) | Sets | 2 | 2 | 4 | 6 | 6 | 10 | 8 | 14 | ... |  |
| Mats(pcs)  | Sets   |                |           |      |   |   |   |   |   |   |     |  |           |      |   |   |   |   |   |    |   |    |     |  |
| 2  | 2  |                |           |      |   |   |   |   |   |   |     |  |           |      |   |   |   |   |   |    |   |    |     |  |
| 3  | 4  |                |           |      |   |   |   |   |   |   |     |  |           |      |   |   |   |   |   |    |   |    |     |  |
| 4  | 6  |                |           |      |   |   |   |   |   |   |     |  |           |      |   |   |   |   |   |    |   |    |     |  |
| ...  |  |                |           |      |   |   |   |   |   |   |     |  |           |      |   |   |   |   |   |    |   |    |     |  |
| Mats(pcs)  | Sets   |                |           |      |   |   |   |   |   |   |     |  |           |      |   |   |   |   |   |    |   |    |     |  |
| 2  | 2  |                |           |      |   |   |   |   |   |   |     |  |           |      |   |   |   |   |   |    |   |    |     |  |
| 4  | 6  |                |           |      |   |   |   |   |   |   |     |  |           |      |   |   |   |   |   |    |   |    |     |  |
| 6  | 10   |                |           |      |   |   |   |   |   |   |     |  |           |      |   |   |   |   |   |    |   |    |     |  |
| 8  | 14   |                |           |      |   |   |   |   |   |   |     |  |           |      |   |   |   |   |   |    |   |    |     |  |
| ...  |  |                |           |      |   |   |   |   |   |   |     |  |           |      |   |   |   |   |   |    |   |    |     |  |

(\*) The quantities provided are for reference only. Customers should determine the actual required quantity based on the specific installation plan.



### Caution

Made of resin. Please take care during handling and maintenance

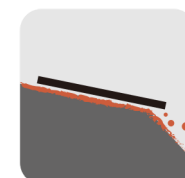
- Due to its lightweight nature, the mat may shift during use. It is recommended to use fixing joints for added stability.
- Always drive slowly when vehicles move across the mat.
- The mat may be damaged when used over gravel, broken concrete, or sharp objects.
- Do not allow shovels, excavator buckets, or steel-tracked vehicles to hit the mat forcefully - this can lead to cracking or accelerated wear.
- Avoid lifting the mat while it's fixed in place or dragging/carrying heavy objects placed on it - doing so may cause breakage.
- When welding on or near the mat surface, use a flame-resistant sheet to protect it.
- Strong winds or storms may blow the mat away. During heavy rain or bad weather, please ensure the mat is securely fastened or temporarily removed. Since the mat floats on water, it should be firmly secured to prevent it from being washed away during flooding.
- The mat may expand or contract with outdoor temperature changes.
  - + Winter: Low temperatures can cause the mat to become brittle and prone to cracking. Flatten the ground thoroughly to avoid empty gaps beneath the mat.
  - + Summer: Under intense sunlight, the mat may expand significantly and cause buckling if laid edge to edge. Leave a 10 mm gap between each mat.
- When installed on concrete or asphalt surfaces, warping may occur due to heat. Use bolts or anchors to fix the mats in place.



Do not use to cover drainage channels or uneven surfaces



Do not use as a base plate for outriggers



Do not start suddenly, stop abruptly, or make sharp turns



Do not use fire on the surface